

Fundraising Wrap Up  
Did You Know?  
2011 Subpermittee Training  
iGive, GoodSearch, & MissionFish

PAGE 2

Holiday Gift Catalog  
2011 Membership and Gift  
Information

PAGE 3



#### Board of Directors

President  
Meredith Bird, DVM  
Vice President  
Chi Chan, DVM  
Acting Treasurer  
Jim McGwin  
Secretary  
Jay Miller

Cynthia Gifford  
Cherrie Perkins  
Mercedes Rivero-Hudec  
Leslie Uhnak

Executive Director  
Kristin Fletcher  
Clinic Director  
Liz Vaughn

# The Wildlife Clinic of RI Newsletter

HAPPY HOLIDAYS 2010



## Second Chances...

It is not terribly unusual to get wild bird calls from folks who have no idea what kind of bird they have found. Of course, there are also those calls from people who are adamant they know what they have: baby raptor (pigeon), baby great blue heron (pigeon), rare seagull from England (also a pigeon). Most unusual, however, was the nice woman from Little Compton whose neighbors found what she could only describe as “a dragon with feathers”. I was certain this specimen was no more rare than a sparrow, cowbird or most likely, pigeon.

We met an hour or so later midway between our homes and I immediately unfolded the box top to peer inside. Whoever was inside growled loudly and opened its mouth wide in warning. Yikes! Once I calmed down a little, I realized that it was, indeed, a bird (it did have feathers), most likely in the nightjar family, like a Whip-poor-will. Never actually having handled a whippoorwill, I was still a little unsure.

When birds experience blunt force trauma, as in car collisions or cat attacks, the air sacs under the skin – used to aid in respiration – rupture and create large bubbles of air. This poor fellow had been found sitting at the base of a tall chain link fence so it wasn’t much of a stretch to assume it had whacked the fence in the dark. It was



also no surprise to find during a quick physical exam of the unidentified critter that it had some extensive air sac damage along the neck and left side – something that time would heal. There didn’t appear to be any broken bones anywhere, but I was certain this guy was pretty sore from his run-in with the fence. I settled him on blankets with some pain medication and left him to calm down a bit from being handled. I headed for the nearest bird identification book.

Judging from his unusual appearance, he was clearly in the nightjar or nighthawk family. My immediate assumption was whippoorwill, since I knew they were common in the state. But when I compared an average whippoorwill’s weight to my little

suspect’s 120 grams of dragon-like indignation, I realized that this bird was twice that of a whippoorwill. The only other bird in that family similar in weight was a Chuck-will’s-widow. Bingo!

A chuck-will’s-widow is an unusual specimen, indeed (see “Did You Know” on page 2); there had only been one or two recorded sightings previously since our state started keeping track decades ago. So rarely seen is this night bird in Rhode Island that I was asked to take several photos to submit for positive identified for the state birding records. To



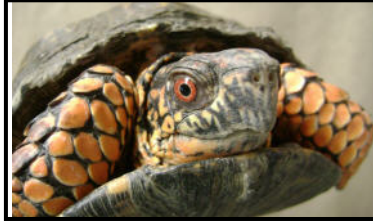
replicate his natural surroundings and make him more comfortable (thus reducing his stress), Chuck recuperated in a large covered cardboard box, nestled in pine needles several inches deep. As an aerial insectivore who catches flying insects mid-flight for food, I knew that in his condition I would need to force feed Chuck a variety of bugs every hour to make certain his weight was maintained while he recovered from his injuries. For over two weeks, we repeated our hourly “dance” of plucking him out of the pine needles, prying his incredibly wide mouth open and tweezing 6-8 bugs dipped in water into the back of his mouth. He in turn thanked me for his meal, growling and threatening me by blowing his mouth up like a blowfish.

Eventually, Chuck was moved into an outdoor aviary whose floor was also covered in pine needles. In a day, he was roosting up in the branches along the roof. At night, I would suspend a flashlight from the highest branch and catch as many moths as I could near my porch lights for him to self-feed on in the dark, much as he would in the wild. Each day I’d replace the batteries and the moths. After a few days, Chuck and I drove back to the yard in Little Compton where he had been found. I placed him on the ground precisely where he had been two weeks earlier. He flew a short 10 feet away and landed near a tree. When I approached him again, he flew off around the house into the woods

~Kristin Fletcher

## If We're Not Raising Wild Babies, We're Raising Money!

After a very busy wildlife season, we have jumped into fundraising with both feet to insure we continue to have the funds (with your help) to care for all the wild critters we receive. On October 30<sup>th</sup>, the 7th annual Halloween Wildstock Benefit Concert was held at Jacky's Galaxie in Bristol. Folks were treated to great music from Band of Brothers, Liquid Fix and Juniper Hill. Sponsors this year included, Jacky's Galaxie, Bartlett Tree Experts, Tupelo Gardenworks, Ltd, HG Associates, 426 Fitness. Wildstock 2010 raised over \$7,700.00.



Two weeks later, on November 13<sup>th</sup>, we switched fundraising gears and held the 2nd annual Fall Wildlife Celebration Wine Tasting Event at Elk's Club, Wakefield, chaired by rehabilitator Judy McGuire. Attendees enjoyed an evening of wine and beer tasting, provided by Hopkinton Liquors, the music of Gary Wright and an informative and enjoyable presentation by Vivian and John Maxson of Born to Be Wild Nature Center, with their education birds Matrix, Gunther and Dusty. There was a very successful silent auction for the event as well. Thanks to all our supporter and your donations, the event was a rousing success by all accounts and raised \$4,445.39 for the clinic! Thank you, Judy and Jim!



Photo by Maria Giannini

Finally, on the evening of the wine tasting, the winning tickets were drawn for the Harvest Raffle, chaired by longtime WRARI supporter and past board member, Patty Gagne. For the third year running, this raffle has received remarkable support from all of our members statewide. Winners this year were Peg Rice for third prize, Joanne Burke for second prize and Maureen Corcoran for first prize. Total raised by the raffle this year is \$1,936.00.

Thank you to everyone who came out and supported us through one of these great fundraising events! Happy Holidays!

## Did You Know?

- The Chuck-will's-widow is the largest of the North American nightjars and its name is derived from the sound of the bird's call.
- Chuck-will's-widows have very tiny feet and legs in relation to their body size. As a result, they don't move on their feet much. Instead they fly up and down into different spots on the ground.
- Chuck-will's-widow lay their eggs on the ground without a nest. If they don't like the site, they scoop up the eggs in their large mouths and move them.
- Primary foods are moths, flying ants, termites, mosquitoes and even small birds.
- They are part of the group of birds known as "goatsuckers" because it was once mistakenly believed that they flew into barns at night and sucked dry the teats of goats.



## 2011 SUBPERMITTEE TRAINING

Send in your application **now** for the **2011 Subpermittee Training Course - the only training of its kind offered in the State of Rhode Island** - and next spring you could be a foster parent to some baby bunnies, squirrels, opossum or wild baby birds!

**Registration for the Training Courses fill up fast - and space is limited!** During our six-hour training session, you will learn the do's and don't's of how to take care of a helpless infant wild baby. But most importantly, you will be taking the first steps toward obtaining a legal permit for wildlife rehabilitation in the state of RI.

**Due to such a high turnout each year, we are requesting advance registrations only.** The first session will be held at the North Kingstown Free Library at the end of January. The second session will be held at the Rogers Free Library in Bristol, RI in March at dates to be determined.

Check our website for more information, or contact Kristin Fletcher at (401) 253-3991.

Thinking of making a charitable donation for tax purposes? You'd be NUTS not to...



Don't miss out on these great opportunities to help out wildlife during this holiday season!



This holiday season, send a gift that means an automatic donation to Wildlife Rehabilitators Association of RI! When you shop at any of over 700 participating online stores through iGive, a portion of each purchase comes back to us in the form of a donation check. It's free for you, free for us, and you pay the same (or less!) than you would by going directly to the store. Shopping online means no wasted gas and no more standing in long lines at the mall. And to all you smart shoppers: don't miss iGive's treasure-trove of coupons, sales, and free shipping. Save money, save time, and send gifts that give twice. What could be better than that?

See for yourself at: [www.iGive.com/WRARI](http://www.iGive.com/WRARI)



Donating to your favorite non-profit couldn't be easier!

GoodSearch is a search engine which donates 50-percent of its revenue to the charities and schools designated by its users. It's a simple and compelling concept. You use GoodSearch exactly as you would any other search engine. Because it's powered by Yahoo!, you get proven search results. The money GoodSearch donates to your cause comes from its advertisers - the users and the organizations do not spend a dime!

Got to [www.goodsearch.com](http://www.goodsearch.com) and tell them that you GoodSearch for the Wildlife Rehabilitators Association of Rhode Island!



The way to fundraise on eBay!

1. Receive donations from eBay sales- eBay Community Sellers donate part or all of their sale to our organization.
2. Turn in-kind donations into cash- Sell goods and services on eBay as a Nonprofit Direct Seller.
3. Receive Donations from PayPal- We can accept donations on eBay from any PayPal user through Donate Now. Visit us on eBay at : [http://donations.ebay.com/charity/charity.jsp?NP\\_ID=34846](http://donations.ebay.com/charity/charity.jsp?NP_ID=34846)

# Have someone on your "Gift List" that is tough to buy for?

What better way to celebrate the true meaning of the holiday season than to give the gift that gives twice!! 100% of the proceeds from each Gift Membership, Adoption Package, or merchandise purchase you make goes directly to The Wildlife Clinic of RI for the care of injured and orphaned wildlife!

Please visit our website at [www.RIWildlifeRehab.org](http://www.RIWildlifeRehab.org) for our **Holiday Gift Catalog** to see more details on prices, package options, and delivery options. You can also simply use the order form below, but **please help us defray the cost of postage by including an additional \$2.00 donation for the shipment of separate items!** Please call the Wildlife Hotline at (401) 294-6363 for more information and to place an order. Happy Shopping!



Embroidery detail

## Give the Gift of Saving Wildlife!

This year, consider giving the animal or bird lover on your holiday shopping list a truly meaningful gift. A membership to the Wildlife Rehabilitators Association of Rhode Island includes quarterly newsletters filled with great practical local wildlife information, heartwarming stories of "second chances" at life for our wild neighbors, and great photos of Rhode Island wild "patients" at the clinic. This special membership package will also include a WRARI Member T-shirt, membership card, and a holiday gift card noting you as the giver. **ALL Proceeds** from this membership directly support the medical care and rehabilitation of injured and orphaned wildlife in Rhode Island. This package is great for adults and children, alike!

Adult Gift Membership.....\$25.00  
Child Gift Membership.....\$20.00

You can choose to become a member with the following membership types:

~ <b>Individual:</b>	\$25
Includes newsletters, membership card, decal, and bumper sticker	
~ <b>Family:</b>	\$50
Also includes our new membership T-shirt, and stickers for the family	
~ <b>Business:</b>	\$75
Also includes public advertisements when you provide a business card!	
~ <b>Supporter:</b>	\$100
Also includes our new membership T-shirt and a surprise gift	
~ <b>Benefactor:</b>	\$200
Also includes 2 of our new membership T-shirts, a surprise gift, and special acknowledgement in future publications	
~ <b>Memorial Gift:</b>	Any Amount
Also includes special acknowledgement card	

\*\*\*WRARI is a non-profit 501 (c) (3) organization. All donations are gratefully accepted for any and all amounts and all are tax deductible. We thank you for your support.

## 2011 GIFT AND MEMBERSHIP FORM

Please fill out this form clearly and completely, in print. Make all checks payable to WRARI. Mail to the address listed on the back of this form.

Name \_\_\_\_\_  
Address \_\_\_\_\_  
City \_\_\_\_\_  
State \_\_\_\_\_ ZIP \_\_\_\_\_  
Phone (H) \_\_\_\_\_  
(C) \_\_\_\_\_  
Email \_\_\_\_\_

Circle One: Individual \$25  
Family \$50  
Business \$75  
Supporter \$100  
Benefactor \$200

**TAX DEDUCTIBLE Donation**  
Adult Holiday Gift Member \$ \_\_\_\_\_  
Child Holiday Gift Member \$ \_\_\_\_\_  
WRARI Mug \$ \_\_\_\_\_  
WRARI Sweatshirt- Size \_\_\_\_\_ \$ \_\_\_\_\_  
Adopt-a-Baby Package \$ \_\_\_\_\_  
\$2.00 Shipping per Item \$ \_\_\_\_\_  
Total Amount Enclosed \$ \_\_\_\_\_  
\*\*\*Check here if Receipt and Tax ID number are requested \_\_\_\_\_

Please fill out the following information if you are purchasing a GIFT or MEMORIAL membership.

Name \_\_\_\_\_  
Address \_\_\_\_\_  
City \_\_\_\_\_  
State \_\_\_\_\_ ZIP \_\_\_\_\_  
Is there a date or message you would like to be acknowledged? \_\_\_\_\_

LOOK FOR US ON THE WEB!

Go to [www.RIWildlifeRehab.org](http://www.RIWildlifeRehab.org)